

USB Interface Driver Installation for Windows Vista/7

Notes: Remove the USB Interface Cable from USB port before installing driver.

A. Install from TUSA DataLog CD

1. Insert the TUSA DataLog CD in the CD Rom drive. Wait (about 10 seconds) while TUSA DataLog setup screen is loaded and displayed. If the TUSA DataLog setup screen does not display after 1 or 2 minutes, select START button



-
2. From the INSTALLATION screen, select USB Cable/Driver Installation.
3. At the "User Account Control" dialogue box (Figure 1), select "Allow"

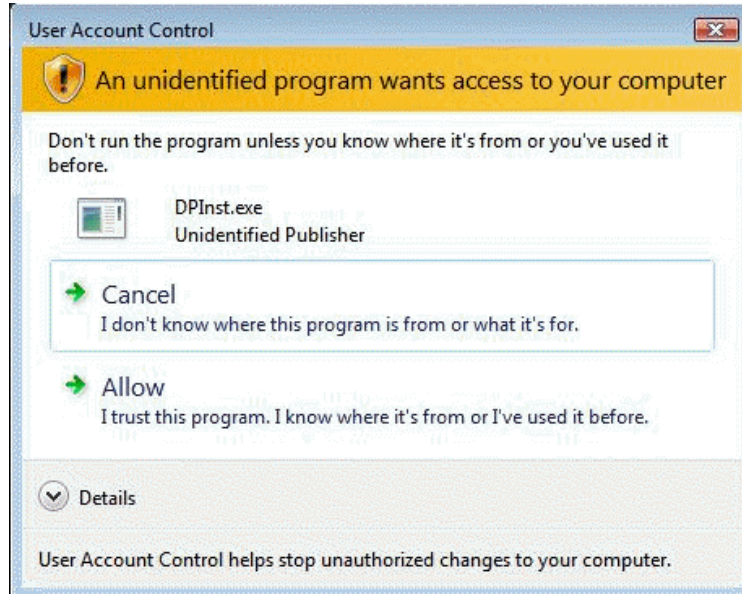


Figure 1

-
-
-
4. At the "2002 Design..." dialogue box (Figure 2), select "Next" to continue.

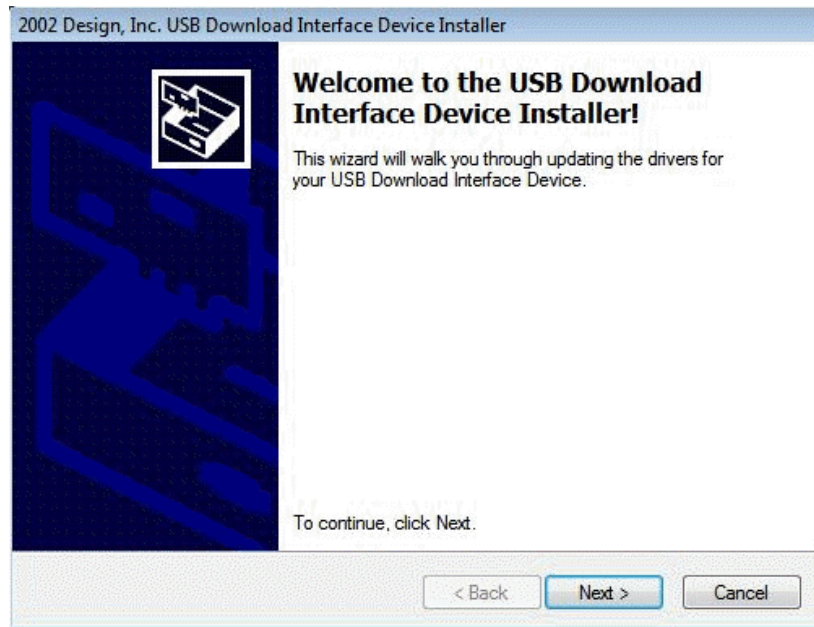


Figure 2

5. At the "2002 Design..." dialogue box (Figure 3), wait for the installation complete. Select "Next" to continue.

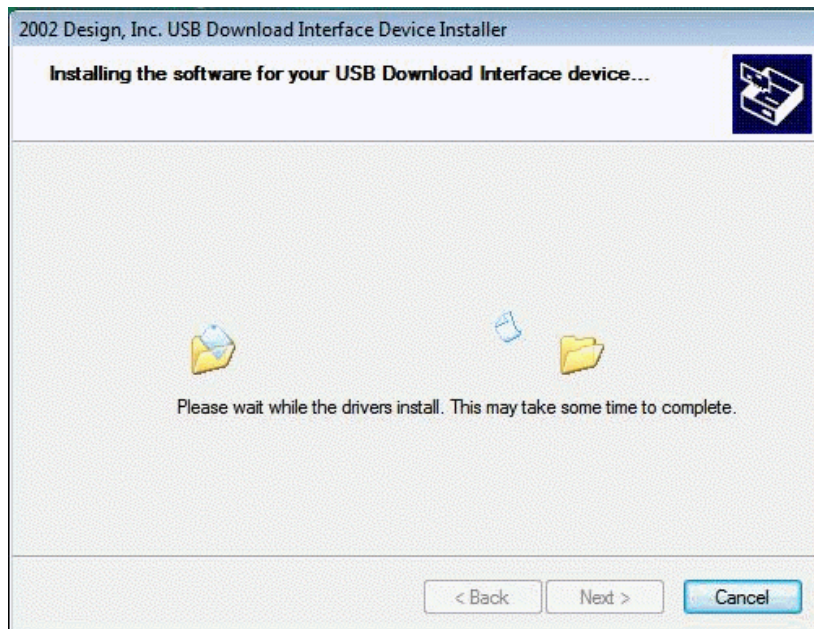


Figure 3

6. At the "2002 Design..." (Figure 4), select "Finish" to finish the installation.

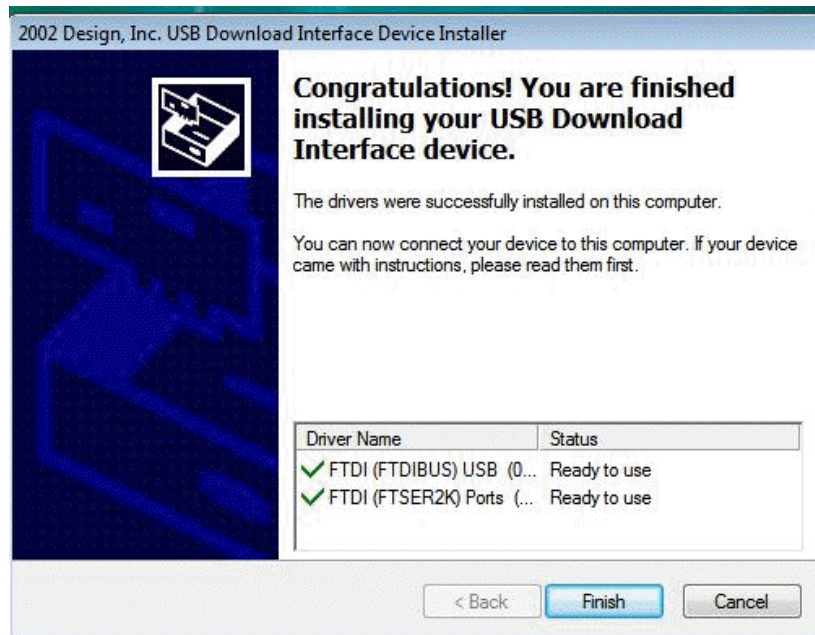


Figure 4

7. Plug the USB Interface Cable to the USB port. Observe the messages from Windows (Figure 5, 6) for first time using the USB Interface Cable.

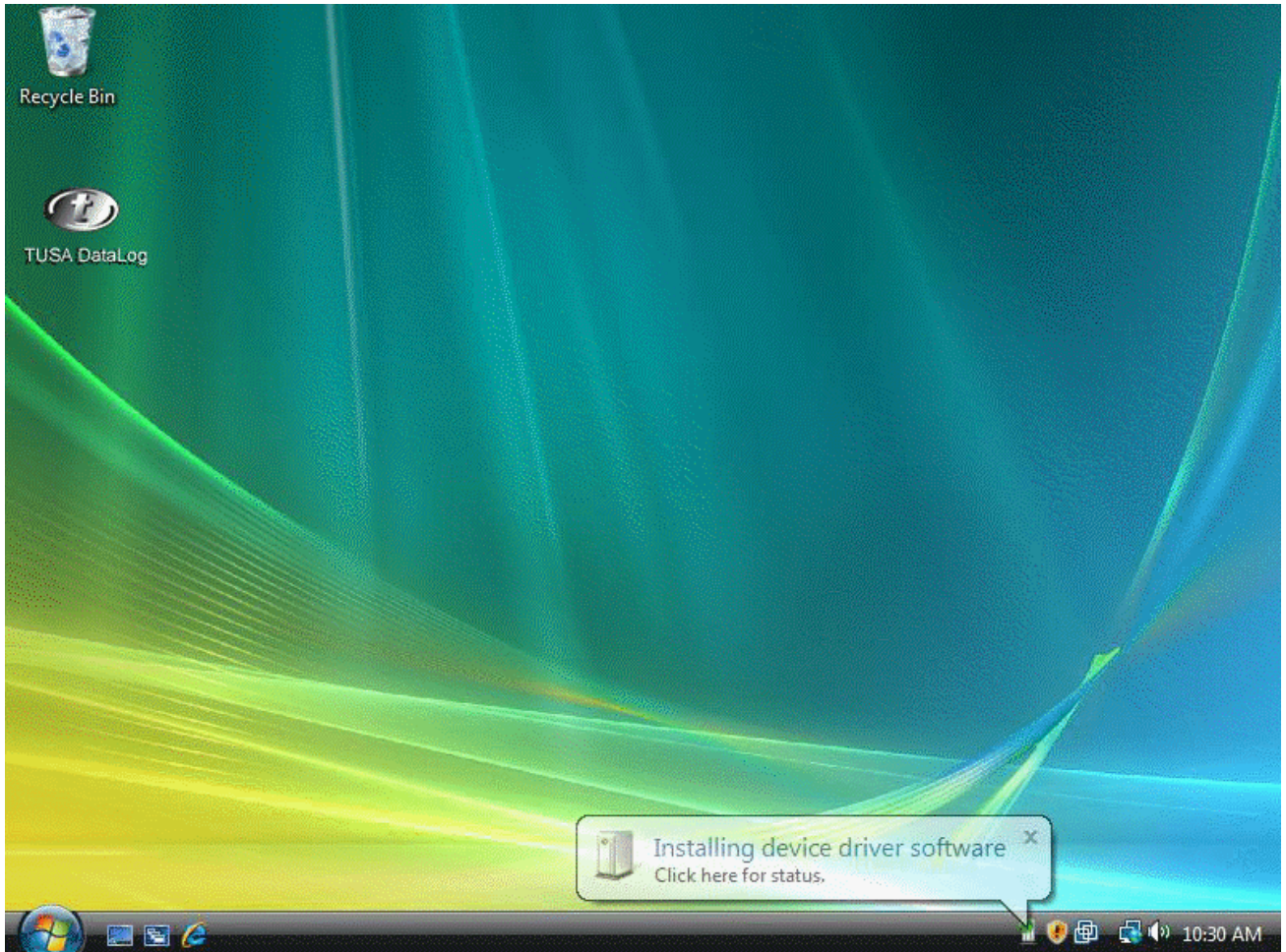


Figure 5

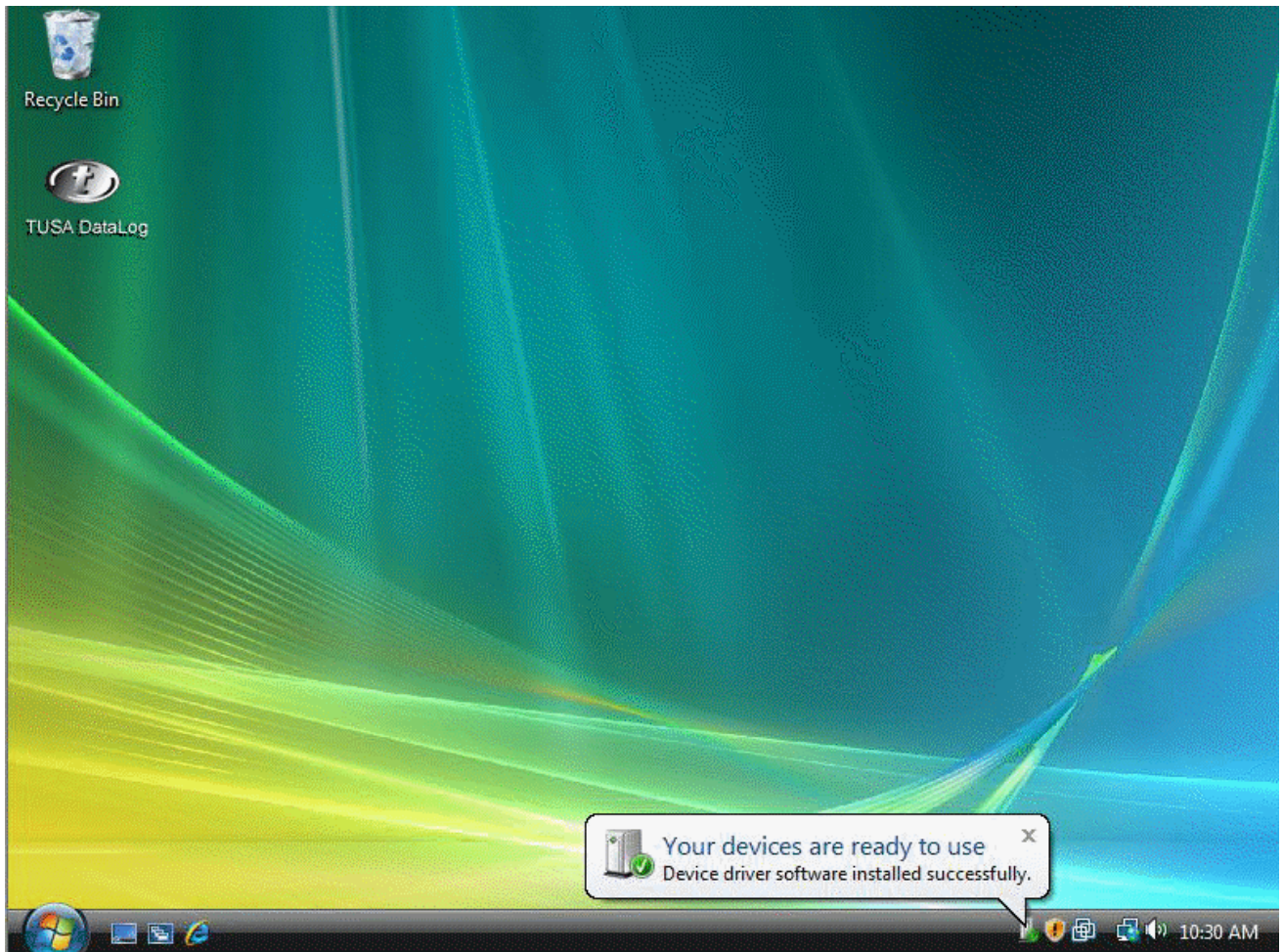


Figure 6

B. Download and Install driver from TUSA website:

1. Download and unzip the USB driver file "2K_Vista_USBDriver.zip" to your desired location.
2. Double click at the file "2K_Vista_USBDriver.exe" to start the installation.
3. Follow step 3 to 7 from the section A above to complete the installation.